

# MULLARD "SUPER POWER" OUTPUT VALVE

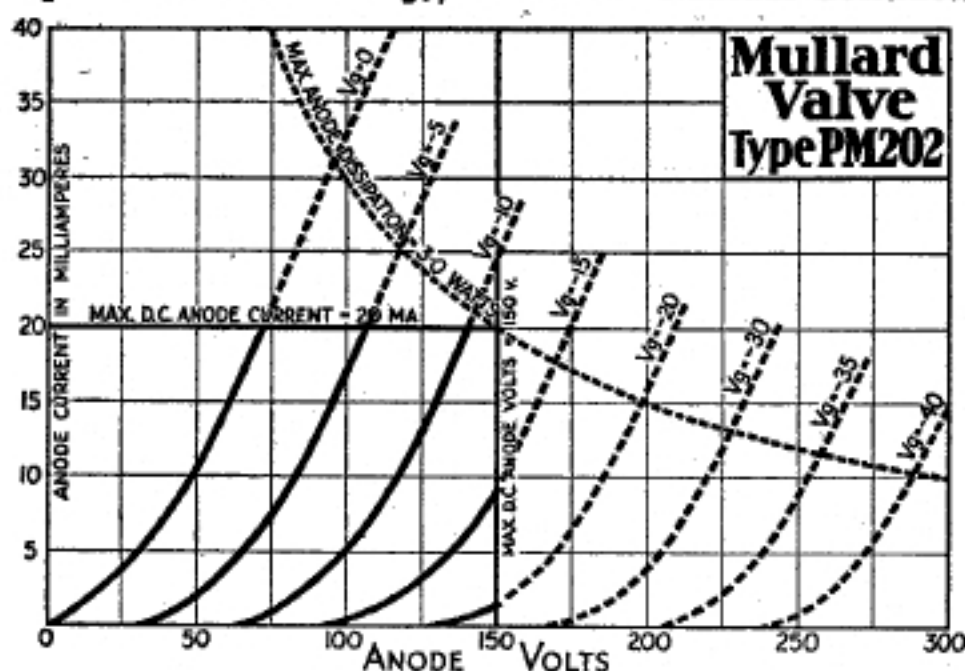
## OPERATING DATA.

Filament Voltage ... 2.0 V.  
 Filament Current ... 0.2 A.  
 Max. Anode Voltage ... 150 V.  
 Optimum Load ... 3,700 ohms.

# TYPE P.M.202

## CHARACTERISTICS.

(At Anode volts 100 ; Grid volts Zero.  
 Anode Impedance ... 2,000 ohms.  
 Amplification Factor ... 7  
 Mutual Conductance 3.5 mA./V



**APPLICATION**  
 As output valve in 3 valve or 4 valve receivers. The P.M. 202 will handle a much greater signal voltage than the P.M.2A and will give an output ample for operating a large speaker at good volume.

## GRID BIAS.

Negative grid bias should be applied to the P.M. 202 according to the following table:—

Anode Voltage	Approx. Neg. Grid Bias Voltage.	Approx. Anode Current (mA.)
100	7.5	10.0
125	9.0—10.5	14.0
150	12.0—15.0	14.0

**PRICE 12/-**



**Mullard**  
**THE MASTER VALVE**

